



**DGS-1210-08P/24P Firmware Version:** 4.10.023  
**DGS-1210-08P/24P PROM Code Version:** 000.006  
**DGS-1210-16/24/48 Firmware Version:** 4.10.023  
**DGS-1210-16/24/48 PROM Code Version:** 000.005

**Published:** Aug. 16, 2013

These release notes include important information about D-Link switch firmware revisions. Please verify that these release notes are correct for your switch:

- If you are installing a new switch, please check the hardware version on the device label; make sure that your switch meets the system requirement of this firmware version. Please refer to Revision History and System Requirement for detailed firmware and hardware matrix.
- If the switch is powered on, you can check the hardware version by checking the device information page on the web graphic user interface.
- If you plan to upgrade to the new firmware release, please refer to the Upgrade Instructions for the correct firmware upgrade procedure.

For more detailed information regarding our switch products, please refer to Related Documentation.

You can also download the switch firmware and technical documentation from <http://tsd.dlink.com.tw>.

## Content:

Revision History and System Requirement: .....	1
Upgrade Instructions:.....	2
Upgrade using Web-UI .....	2
New Features:.....	3
Problem Fixed: .....	4
Known Issues: .....	4
Related Documentation: .....	4

## Revision History and System Requirement:

Firmware Version	Date	Model	Hardware Version
V4.10.023	Jun-14-2013	DGS-1210-08P DGS-1210-16 DGS-1210-24 DGS-1210-24P DGS-1210-48	D1
V4.10.000	Aug-16-2013	DGS-1210-16 DGS-1210-24 DGS-1210-48	D1
<b>Note: This is not an official release version,</b>			

just an intermediate one.

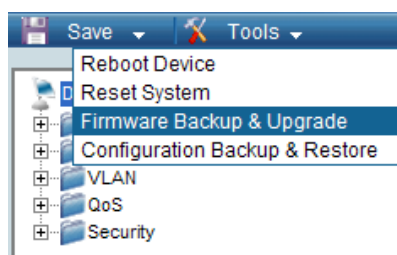
V4.00.026	Mar-13-2013	DGS-1210-16 DGS-1210-24 DGS-1210-48	D1
-----------	-------------	---	----

## Upgrade Instructions:

You can download the firmware from D-Link web site <http://tsd.dlink.com.tw>, and upgrade through web UI.

### Upgrade using Web-UI

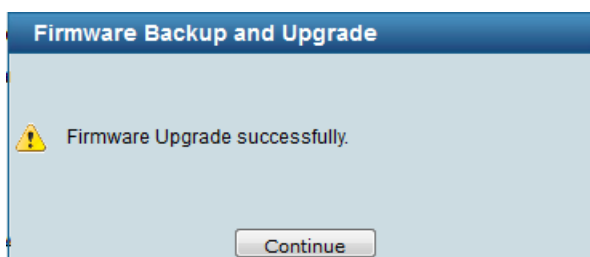
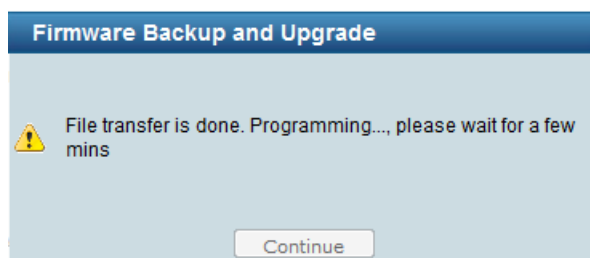
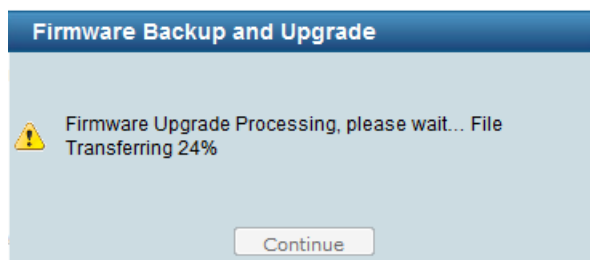
1. Connect a workstation installed with java SE runtime environment to any switch port of the device.
2. Open the web browser from the workstation and enter the IP address of the switch. The switch's default IP address is 10.90.90.90.
3. Enter administrator's password when prompted. The password is **admin** by default.
4. To update switch's firmware or configuration file, select **Tools > Firmware Backup & Upgrade** from the banner.



5. You can choose **HTTP** or **TFTP** to upgrade firmware. Take HTTP for example. Click **Browse** to browse your inventories for a saved firmware file, and then click **Upgrade** after selecting the firmware file you want to restore.

 A screenshot of the 'Firmware Backup and Upgrade' web page. The 'HTTP' radio button is selected. Under 'HTTP', there are two sections: 'Backup firmware to file' with a 'Backup' button, and 'Upgrade firmware from file' with a text input field, a 'Browse...' button, and an 'Upgrade' button. The 'TFTP' radio button is unselected. Under 'TFTP', there are four fields: 'TFTP Server IP Address', 'TFTP File Name', 'Backup firmware to file' (with a 'Backup' button), and 'Upgrade firmware from file' (with an 'Upgrade' button'). The page has a 'Safeguard' logo in the top right corner.

- Wait until the "Firmware Upgrade Successful" message pops up and auto reboot



## New Features:

### DGS-1210-16/24/48:

Firmware Version	New Features
V4.10.023	<ol style="list-style-type: none"> <li>IPv6 Management</li> <li>IPv6 ACL</li> <li>IPv4/v6 Dual Stack</li> <li>Smart Binding</li> <li>D-Link Network Assistant (DNA)</li> <li>Multiple Language support</li> <li>ZoneDefense MIB</li> <li>Time-based PoE</li> <li>Firmware Merge from two(.had &amp; .knl) to one (.had)</li> <li>Auto Reboot after Firmware Upgrade</li> </ol>
V4.00.026	First Release

### DGS-1210-08P/24P:

Firmware Version	New Features
V4.10.023	First Release

## Problem Fixed:

### DGS-1210-16/24/48:

Firmware Version	Problems Fixed
V4.10.023	NA
V4.10.000	V4.00.026 official release has two images (kernel image and runtime image). V4.10.000 merges them into one image.
V4.00.026	First Release

### DGS-1210-08P/24P:

Firmware Version	Problems Fixed
V4.10.023	First Release

## Known Issues:

Firmware Version	Issues	Workaround
V4.00.026 (DGS-1210-16/24/48 only)	In F/W v4.00.026, the firmware is divided into two parts, the kernel image and the runtime image. And they are merged to a single image in next release v4.10.023. But the merged image size is larger than the original design and thus v4.00.026 cannot be successfully upgraded to v4.10.023 once.	To make upgrade successful, the user has to upgrade to intermediate version v4.10.000 and then upgrade to v4.10.023. Note: v4.10.000 is NOT an official release firmware.
V4.00.026 (DGS-1210-48 only)	Because the PHY takes combo ports as a single active interface, any parameter setting change will be applied to the same interface, including copper and fiber port. For example, when set copper port to 100Mb in combo port, fiber port will link down because it is set to 100Mb, too.	This DGS-1210-48 will only support 1G and won't support 100Mb in firmware v4.10.

## Related Documentation:

- DGS-1210 Web UI Reference Guide
- D-Link Network Assistant (DNA) User Guide
- DGS-1210 Series Getting Started Guide